

NDF100 / NDF125 / NDF150

Dual Fuel Burner

766kW - 4059kW



NDF100/125/150 Dual Fuel Burner features:

- Suitable for gas (LPG, NG or TG) and oil (LFO, MFO or HFO)
- Burner mounted control panel
- Simple switch changeover between fuels
- 2 stage control with 3 stage control (high/med/low) on Class D oil (Modulating control standard on NDFR models)
- Designed and approved in accordance with the European Standard EN 676 and EN267
- NDFL - Class 'D' oil 5.5 cSt @ 40°C
- NDFR - Class 'G' oil 40 cSt @ 100°C
- Fully closing air damper
- Oil Heater – Separate floor mounted pumping & heating unit included with burner to heat oil for atomisation for NDFR. (Intermittent operation during standby to maintain oil temperature for immediate restart).
- NDFR burners require a pre-heated ring main oil supply, minimum temperature @ 83°C for Class 'G' oil
- All kW ratings are nett CV
- Suitable for high resistance boilers
- Industry standard components easily available
- Options Extras:
 - Modulating control (Std on NDFR models)
 - Air inlet silencer (Std on NDF100-41 and above)
 - Acoustic cover (wheel-over)
 - Water level control panel (AOTC)
 - Free-standing pumping & heating unit (Std on NDFR models)



ISO9001



0558

For more information on all Nu-way products
please visit www.nu-way.co.uk



Enertech Group

**NDFL – GAS & DISTILLATE FUEL
3 STAGE OR MODULATING CONTROL**

Burner Type Capacity	Kw	NDFL100		NDFL125			NDFL150			
		766-2706	766-2706	1786-3247	1786-3247	1786-3247	1308-4059	1308-4059	1308-4059	
Fan Motor	V/ph/Hz	100-41	100-44	125-36	125-41	125-44	150-36	150-41	150-44	
		380-420 / 3 / 50			380-420 / 3 / 50			380-420 / 3 / 50		
	kW	11.0	11.0	7.5	11.0	15.0	11.0	11.0	15.0	
Run Current	A/each phase	24.0	24.0	17.5	24.0	31.0	24.0	24.0	31.0	
Cable size	mm ²	6.0	6.0	4.0	6.0	10.0	6.0	6.0	10.0	
Fuse	A (HRC)	50	50	40	50	50	50	50	50	
Pump Motor	kW	1.5	1.5	1.5	1.5	1.5	1.5	1.5	1.5	
Control unit		LFL		LFL			LFL			
Flame monitoring		UV Cell		UV Cell			UV Cell			
Control Options		3 Stage or Modulating		3 stage or Modulating			3 stage or Modulating			
Air damper motor		Yes		Yes			Yes			
Oil Pressure gauge		Yes		Yes			Yes			
Noise	@ 1m dBA	92	92	92	93	96	92	93	96	
NOx* (gas/oil)	mg/kWh	<80 / <120		<80 / <120			<80 / <120			
Gross weight	kg	300		420			420			
Packing dimensions	l x w x h (cm)									

Other electrical supply options available on request.

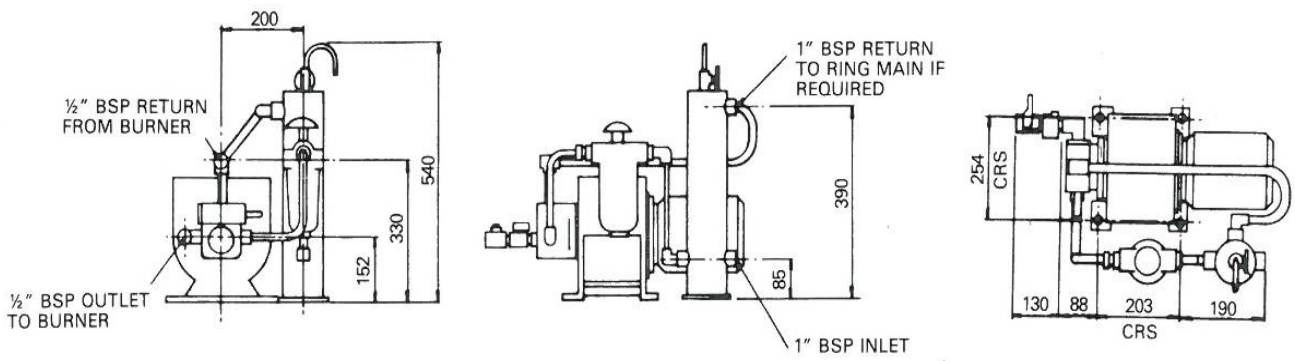
*Typical NOx level subject to combustion chamber design and site conditions.

**NDFR – GAS & RESIDUAL FUEL
MODULATING CONTROL AS STANDARD**

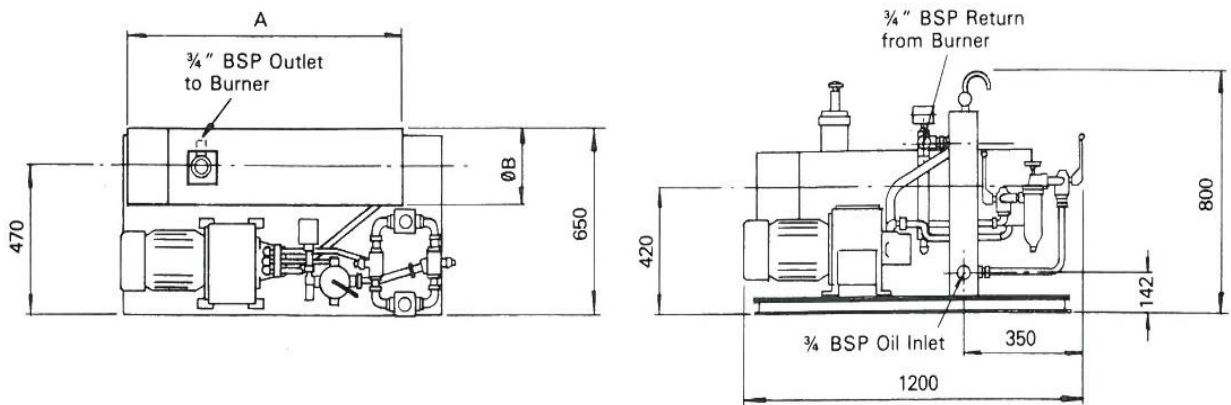
Burner Type Capacity	kW	NDFR100		NDFR125			NDFR150			
		766-2706	766-2706	1786-3247	1786-3247	1786-3247	1308-4059	1308-4059	1308-4059	
Fan Motor	V/ph/Hz	100-41	100-44	125-36	125-41	125-44	150-36	150-41	150-44	
		380-420 / 3 / 50			380-420 / 3 / 50			380-420 / 3 / 50		
	kW	11.0	11.0	7.5	11.0	15.0	11.0	11.0	15.0	
Run Current	A/each phase	35.0	35.0	30.5	37.0	48.0	41.0	41.0	48.0	
Cable size	mm ²	10.0	10.0	10.0	16.0	16.0	16.0	16.0	16.0	
Fuse	A (HRC)	60	60	60	60	80	80	80	80	
Pump Motor	kW	1.5	1.5	1.5	1.5	1.5	1.5	1.5	1.5	
Pre-Heater	kW	7.5	7.5	9.0	9.0	9.0	12.0	12.0	12.0	
Control unit		LFL		LFL			LFL			
Flame monitoring		UV Cell		UV Cell			UV Cell			
Control Options		Modulating		Modulating			Modulating			
Air damper motor		Yes		Yes			Yes			
Oil Pressure gauge		Yes		Yes			Yes			
Noise	@ 1m dBA	92	92	92	93	96	92	93	96	
Gross weight	kg	400		520			520			
Packing dimensions	l x w x h (cm)									

Other electrical supply options available on request.

- All data calculated at 415 volts.
- 3 stage NDFL burners have a burner mounted oil pumping unit. NDFR burners have separate pumping and heating units.
- Run currents are for oil firing - when on gas this will be reduced unless oil is circulated.



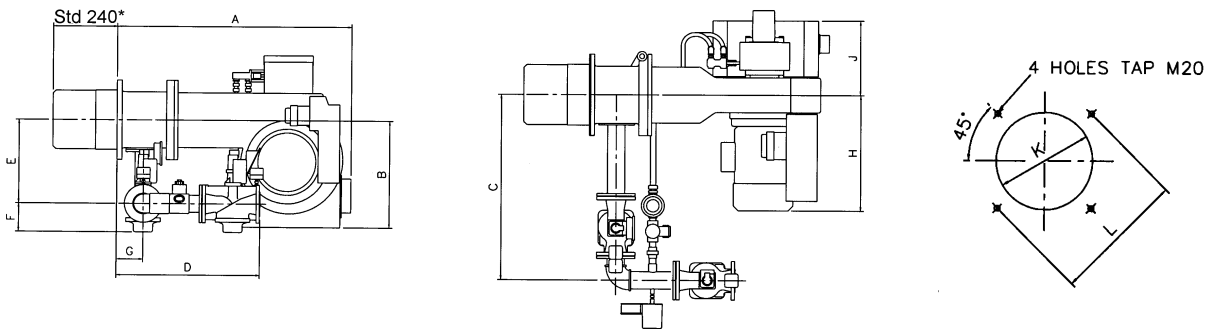
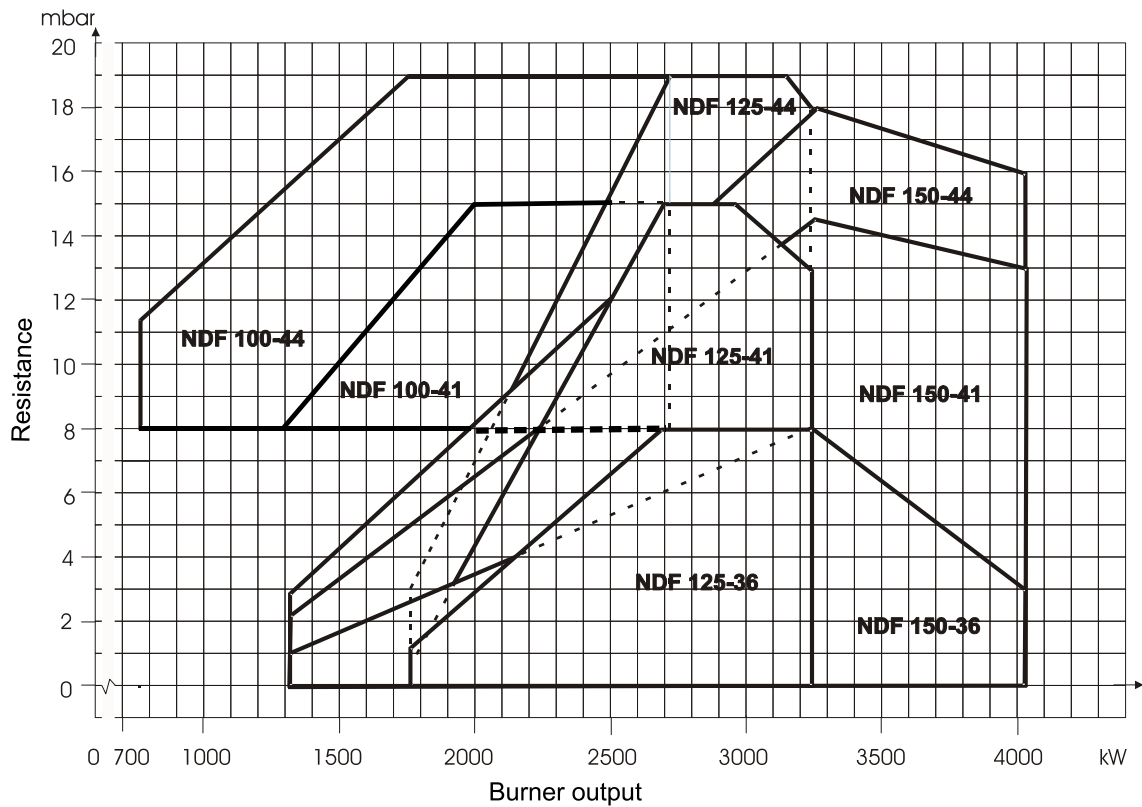
NDFL Modulating: Pump Unit



kW	Dim A	ØB
4.5 & 6.0	692mm	155mm
7.5 & 9.0	684mm	224mm
12.0	586mm	224mm

NDFR Modulating: Heating and Pumping Unit

BURNER SELECTION CHART



Burner	A	B	C	D	E	F	G	H	J	K	L
NDF100-41, 44	1245	500	955	760	445	165	141	600	385	350	454
NDF125-36, 41, 44	1245	500	955	760	445	165	141	600	385	350	454
NDF150-36, 41, 44	1245	500	925	760	410	165	141	600	385	350	454

Enertech Limited, Ten Acres, Berry Hill Industrial Estate,
Droitwich Spa, Worcestershire, WR9 9AQ

tel: +44 (0) 1905 794331 • fax: +44 (0) 1905 794017
email: info@nu-way.co.uk • web: www.nu-way.co.uk



23-10-2018