

The above chart illustrates the excellent stability characteristics of the SVG 100 series, from very high excess air (XSA) to fuel rich (XSF) operating conditions, and the burner's wide turndown range (on ratio or with excess air).

Hauck's SVG burners offer reliable and dependable high performance with unmatched versatility. Your burner can be equipped with the tile option that best suits your unique heating needs for pulse operation— as well as other control methods—and maintain all of the operational benefits you've come to expect from a modern high performance burner.



Car Bottom Furnace



Brick Tunnel Kiln



Flame Shape

[www.hauckburner.com](http://www.hauckburner.com)

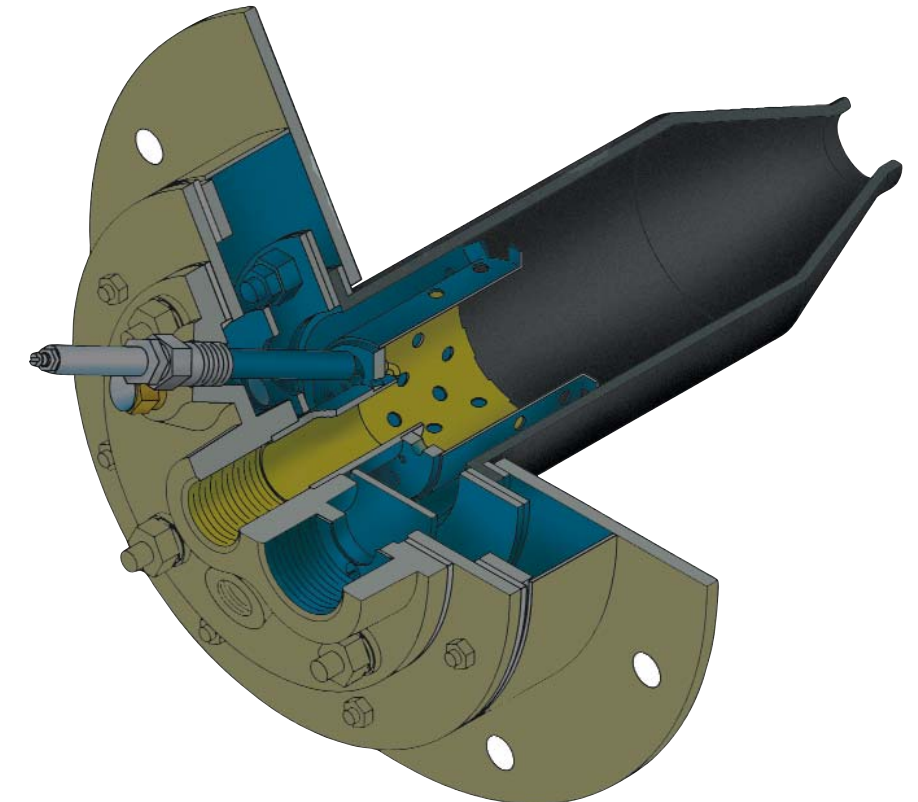


**Features**

- The widest range of performance capabilities available in the industry
- Available in 8 and 16 osig (3,450 and 6,900 Pa) inlet air pressure
- High and medium velocity models
- Refractory, ceramic, and alloy tile options
- Highest exit velocities available - high velocity up to 570 ft/sec (170 m/sec), low velocity up to 250 ft/sec (76 m/sec)
- Low emissions (NO<sub>x</sub>, VOCs, aldehydes)
- Available with metric air/gas connections

**Benefits**

- Unmatched versatility to meet every application requirement
- Wide performance envelope allows unequalled operating flexibility
- Uniform exhaust gas temperature profile
- High excess air with the lowest CO and aldehydes
- Flame exposed components of high alloy stainless steel for increased durability



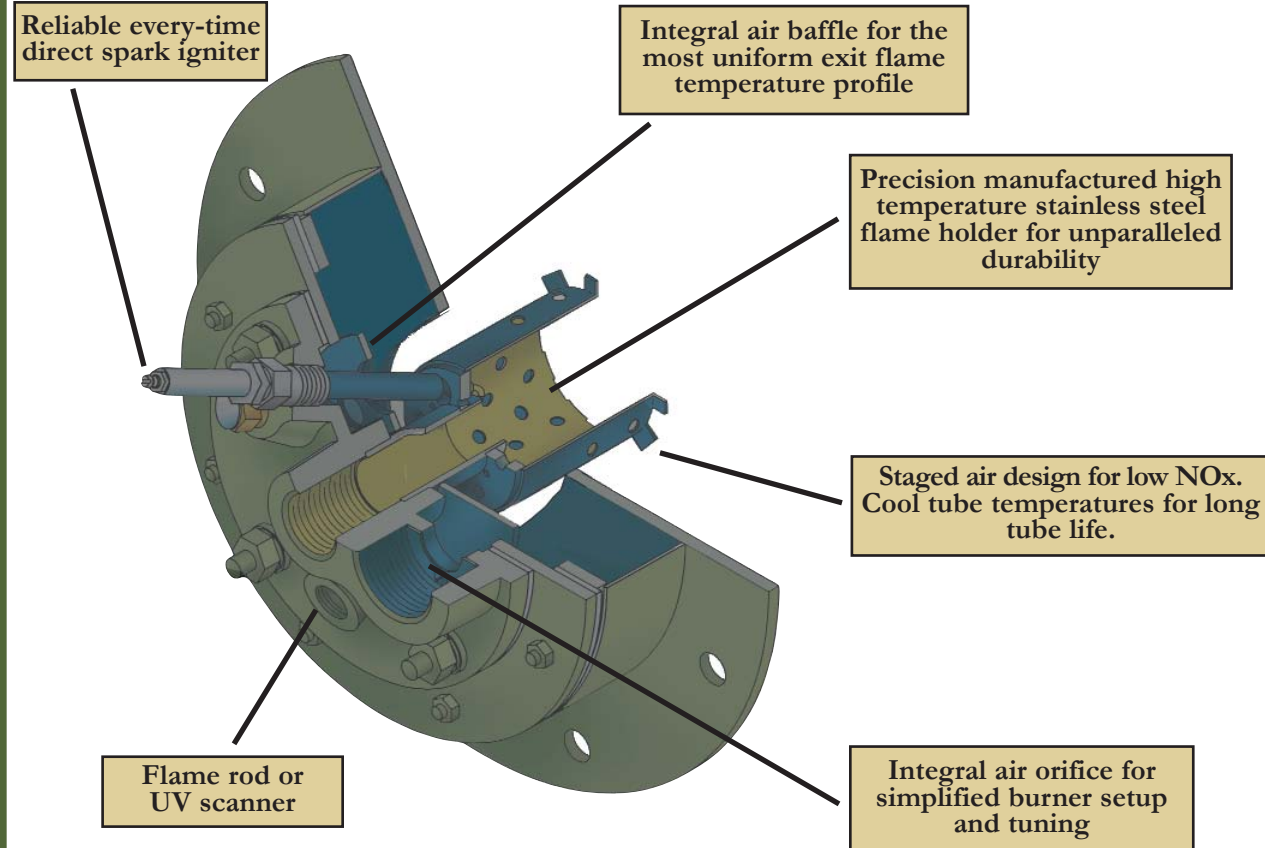
Hauck's modern SVG Super VersaTile Gas Burners are designed for applications that benefit from intensive combustion gas recirculation, increased efficiency, improved temperature uniformity, and substantially reduced emissions. Offered in three separate series. The 100 series has full capacity at 16 osig (6,900 Pa) while the 200 series reaches the same capacity at an air inlet pressure of 8 osig (3,450 Pa). The 'E' series has the rating of the 200 series with metric air and gas connections. Available in a variety of tile materials and configurations, the SVG burner family includes medium and high velocity models. SVG burners reliably and dependably fire any clean industrial fuel gas over a wide operational range from excess air to excess fuel.

**HAUCK MANUFACTURING COMPANY**

P.O. Box 90  
Lebanon, PA 17042  
Phone: 717-272-3051  
Fax: 717-273-9882  
[www.hauckburner.com](http://www.hauckburner.com)

Combustion Excellence Since 1888

# SVG SUPER VERSATILE GAS BURNER



SVG Burner Model		HR	HS	HC	HA	MR	MS	MA
		Capacity (10 <sup>3</sup> Btu/hr) Capacity (kW)						
SVG 110/210	25-E	110 29.1	110 29.1	110 29.1	110 29.1	120 31.7	120 31.7	120 31.7
SVG 112/212	32-E	250 66.1	250 66.1	250 66.1	250 66.1	275 72.7	275 72.7	280 69.2
SVG 115/215	40-E	410 108	410 108	410 108	410 108	415 110	415 110	410 108
SVG 120/220	50-E	700 185	700 185	700 185	700 185	750 198	750 198	735 194
SVG 125/225	65-E	1,000 265	1,000 265	1,000 265	1,000 265	1,200 317	1,200 317	1,240 328
SVG 130/230	80-E	1,300 343	1,300 343	1,300 343	1,300 343	1,500 395	1,500 395	1,510 400
SVG 140/240	100-E	2,200 582	2,200 582	2,200 582	2,200 582	2,500 660	2,500 660	2,400 635
SVG 160	N/A	5,000 1,320	Not available	5,000 1,320	5,000 1,320	5,300 1,400	Not available	5,300 1,400
SVG 260	150-E	4,350 1,150	Not available	4,350 1,150	4,350 1,150	4,600 1,220	Not available	4,600 1,220
SVG 180	N/A	9,000 2,380	Not available	Not available	Not available	9,000 2,380	Not available	9,150 2,430
SVG 280	200-E	Pending	Not available	Not available	Not available	Pending	Not available	Pending

## High Velocity Models

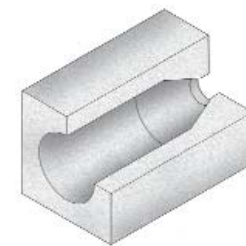


**HR**

### High Velocity Round Refractory Tile

Ideal for hard and soft wall furnaces.

Temperatures to 2800°F (1540°C). Preheated air to 800°F (425°C).



**HS**

### High Velocity Square Refractory Tile

For hard wall furnaces. Ideal drop-in replacement for many older, low performance burner models.

Temperatures to 2800°F (1540 °C). Preheated air to 800°F (425°C).

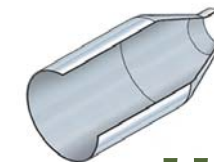


**HC**

### High Velocity Ceramic Tile

Silicon carbide tile is compact and light, ideal for easy retrofit or new soft wall furnaces.

Temperatures to 2500°F (1370°C). Preheated air to 800°F (425°C).



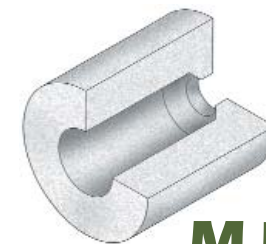
**HA**

### High Velocity Alloy Tile

Cool design alloy tile ideal for soft wall furnaces using ambient air.

Temperatures to 2000°F (1090°C).

## Medium Velocity Models

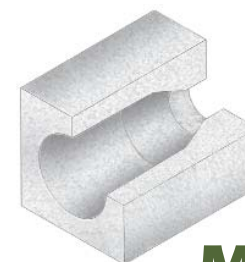


**MR**

### Medium Velocity Round Refractory Tile

Ideal for hard and soft wall furnaces.

Temperatures to 2800°F (1540°C). Preheated air to 800°F (425°C).



**MS**

### Medium Velocity Square Refractory Tile

Ideal for hard and soft wall furnaces.

Temperatures to 2800°F (1540°C). Preheated air to 800°F (425°C).



**MA**

### Medium Velocity Alloy Tile

Cool design alloy tile ideal for soft wall furnaces using ambient air.

Temperatures to 2000°F (1090°C).